

PRAIRIE ROOTS RUN DEEP



PDF [Zoom] images on QR link. Not necessary during the presentation but feel free to access them now. Can be viewed later.

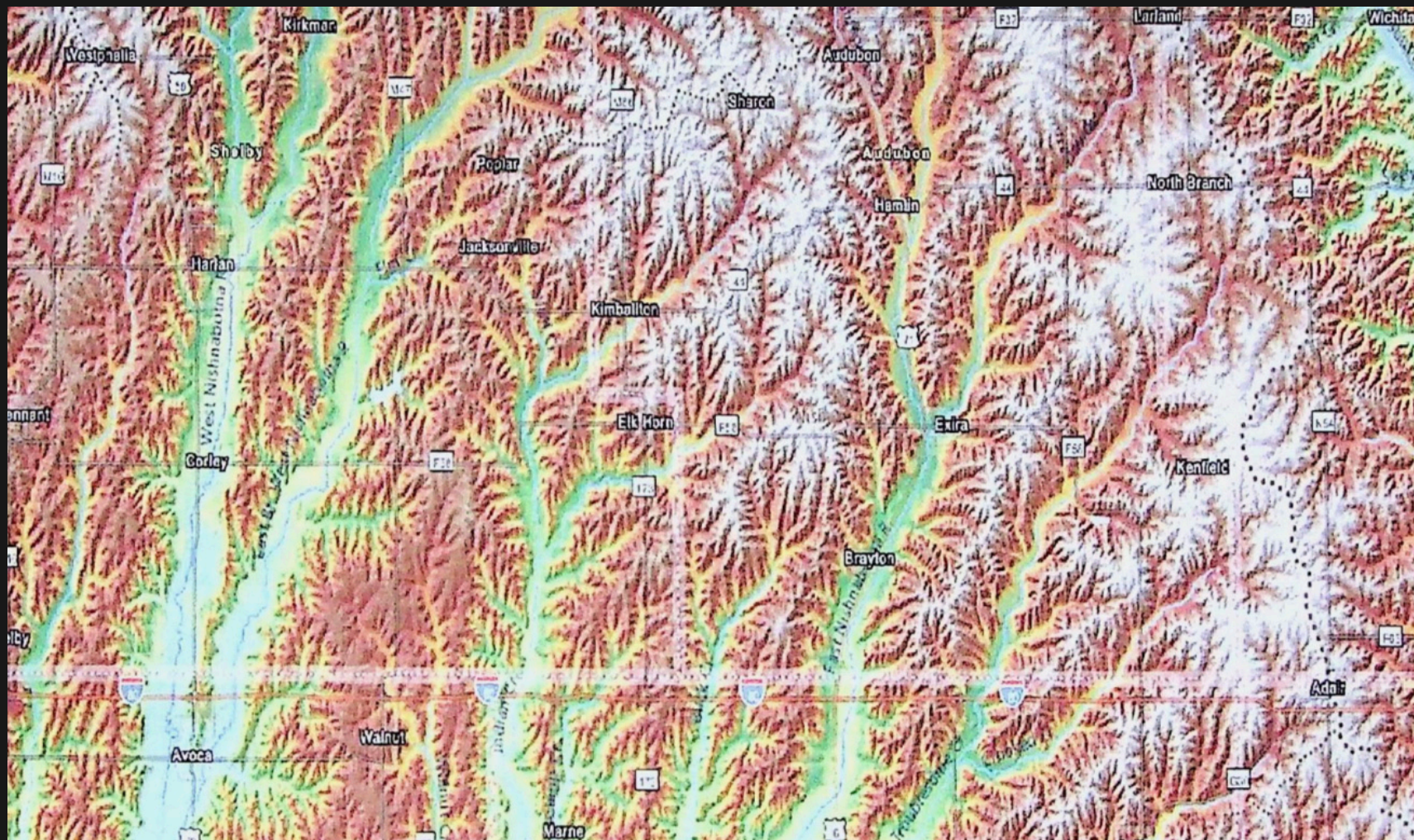


Image 1: an aerial LiDar colored laser scan of the terrain over Shelby County. It is a visual aid to the reference referred to in the 1889 Shelby County history book.

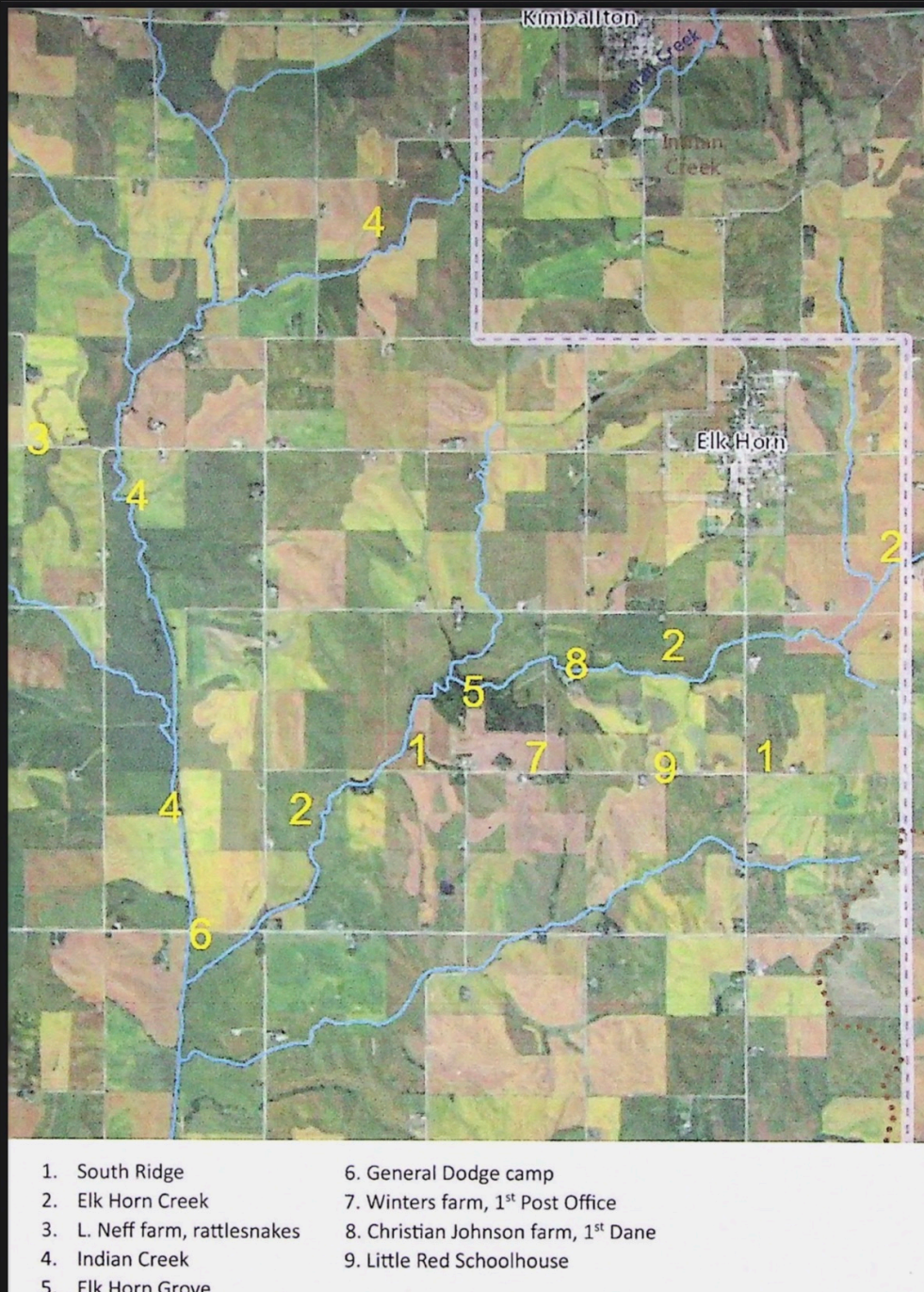


Image 2: Map of Clay Township with various mentioned locations shown.

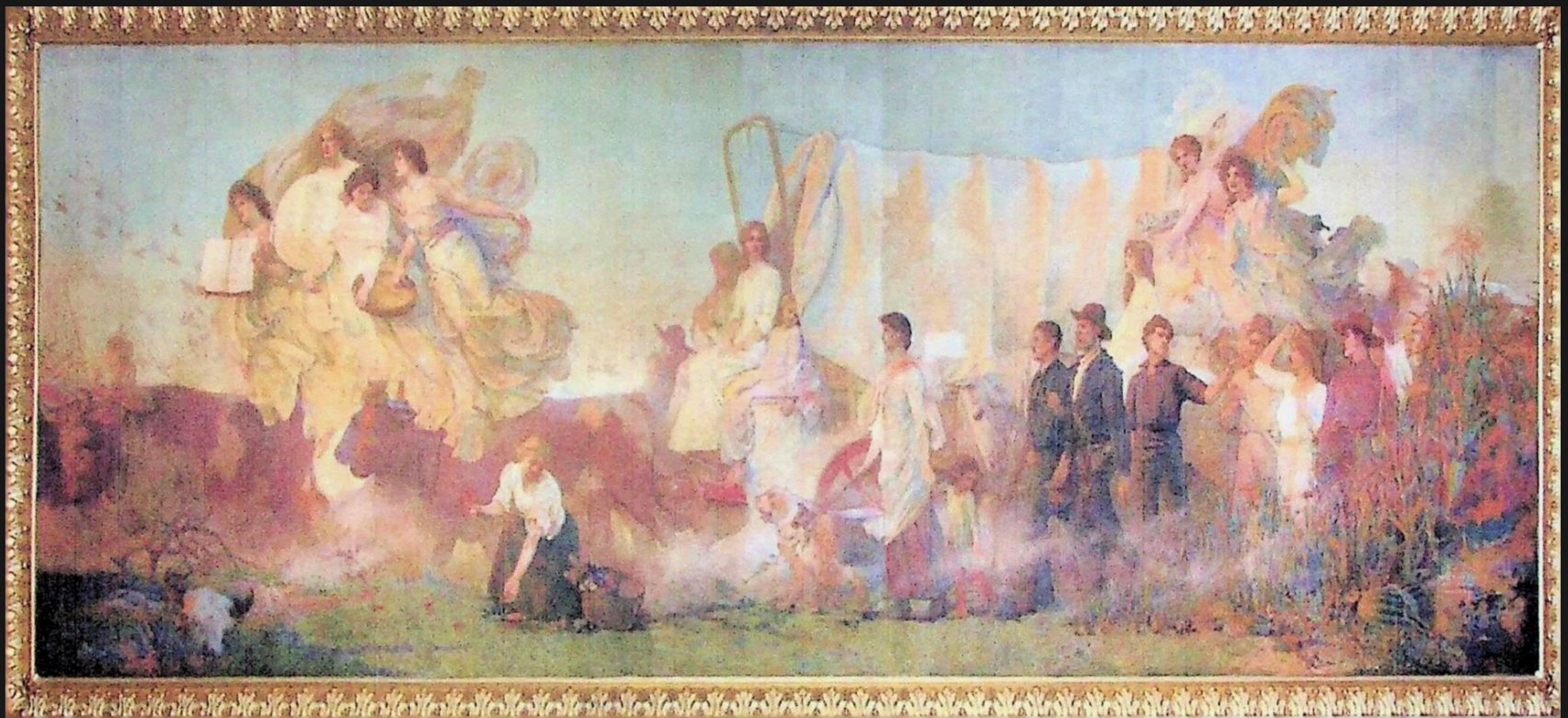


Image 3: "Westward" mural of Edwin Blashfield. 14 ft high, 40 ft wide found in the Iowa Capitol building.